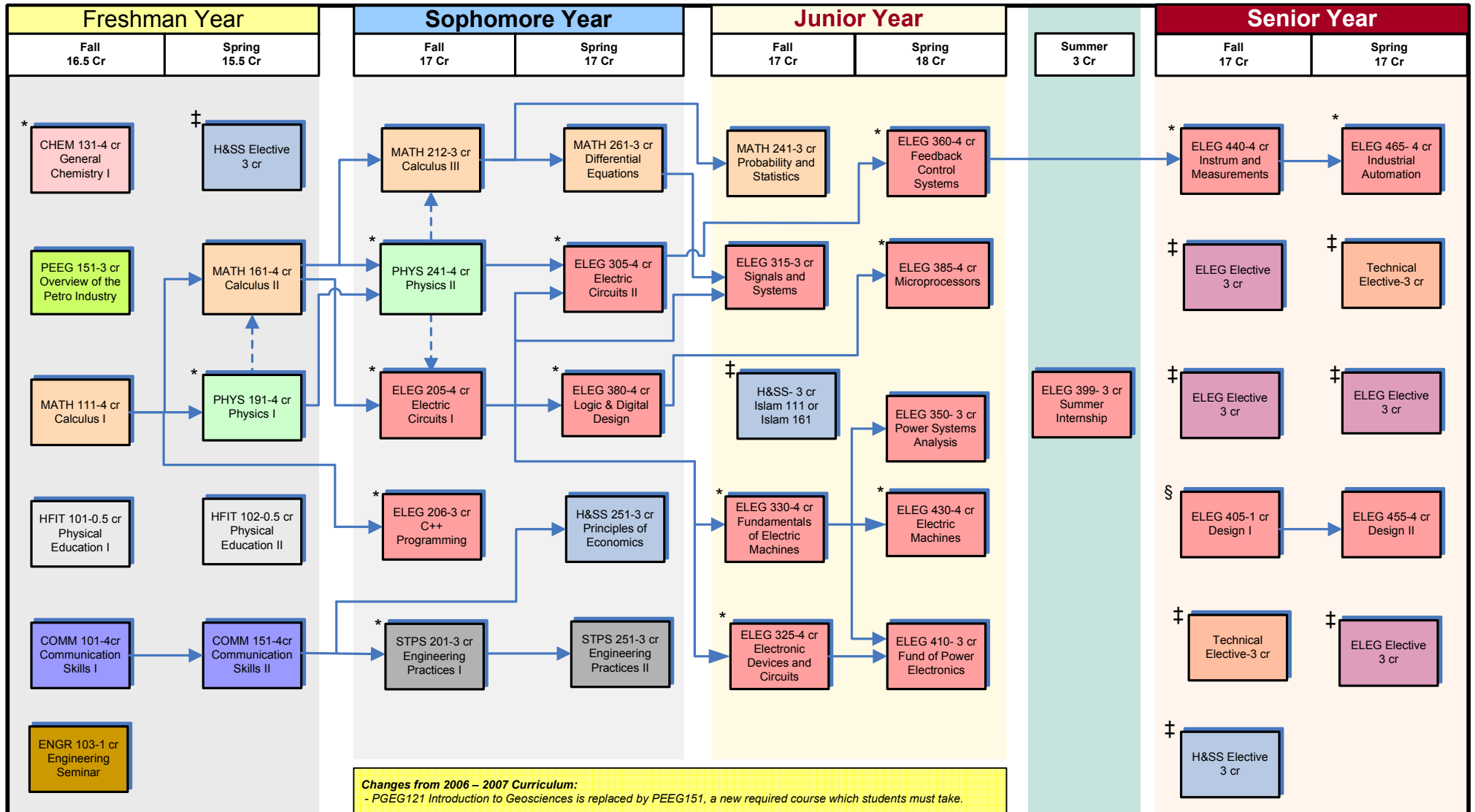


Applies only to students who became Freshman in 2007

**THE PETROLEUM INSTITUTE
ELECTRICAL ENGINEERING PROGRAM
2007 - 2008**



Legend

- Prerequisite
- Corequisite (to be taken concurrently)
- ‡ Check Catalog for prerequisites
- * Course has a lab component
- § Senior standing and Advisor approval

COMM : English
STPS : Engineering Practices
HFIT : Physical Education
H & SS : Humanities & Social Science

EE Program requirements:

- 14 EE Required courses (52 cr)
- 4 EE Electives (12 cr)
- 2 Capstone Design (5 cr)
- 1 Summer Internship (3 cr)
- 1 Chem Course (4 cr)

- 5 Math Courses (17 cr)
- 4 H&SS Courses (12 cr)
- 2 STPS Courses (6 cr)
- 2 HFIT Courses (1 cr)
- 2 COMM Courses (8 cr)

- 1 PEEG Course (3 cr)
- 2 Tech Electives (6 cr)
- 2 PHYS Courses (8 cr)
- 1 Engr Seminar (1 cr)

EE Program Electives

- ELEG420 Modern Control Systems
- ELEG450 Elect. Power Distribution
- ELEG460 Digital Signal Processing
- ELEG470 Adv. Power Electronics
- ELEG480 Digital Control Systems
- ELEG489 Special Topics in Elect. Eng.
- ELEG490 Power System Protection

Technical Electives

- ENGR201 Statics
- MATH361 Advanced Engineering Math.
- MATH365 Numerical Methods
- MATH461 Linear Algebra
- MEEG311 Thermodynamics
- MEEG324 Engineering Dynamics
- MEEG354 Fluid Mechanics
- PHYS341 Modern Physics III
- CHEM181 General Chemistry II

138 credit total