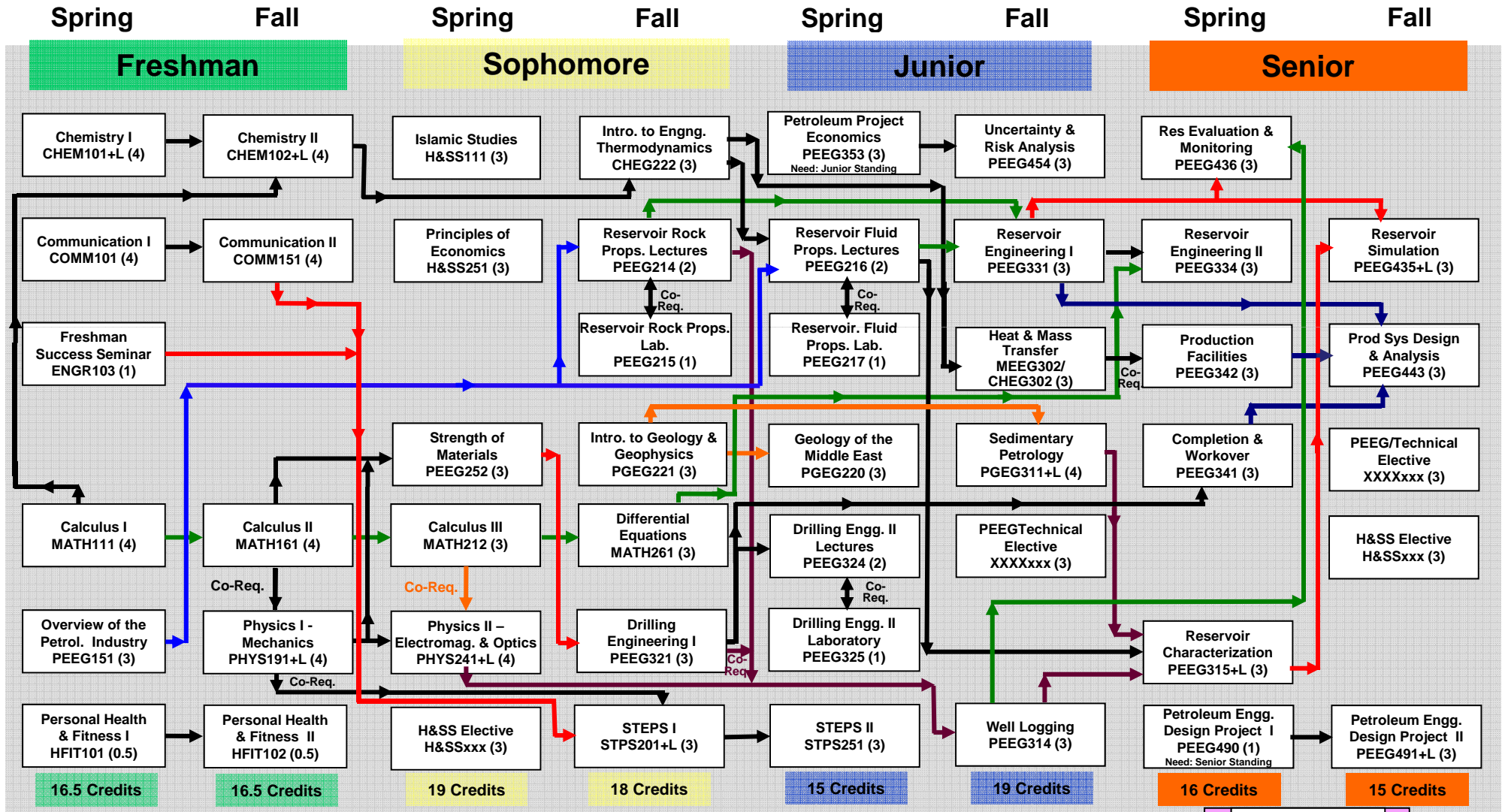


Department of Petroleum Engineering Curriculum 2011-12: Spring Entry Alternate Flowchart

Applies to students entering the PE program (freshmen year) in the 2011-12 academic year (Spring)



Notes:
 Co-Req. means course must be taken at same time, or has already been completed.
 Co-Req. with a double headed arrow means both courses must be taken at the same time.
 +L indicates a course includes a laboratory session (usually 3-hours)
 The COMP100, Freshman Computing Applications, requirement must be met by all students

Total Credits
 $33 + 37 + 34 + 3 + 3 + 31 = 138$

Petroleum Engg.
 Internship
 PEEG 397 (3)

Issued
 24-Aug-11